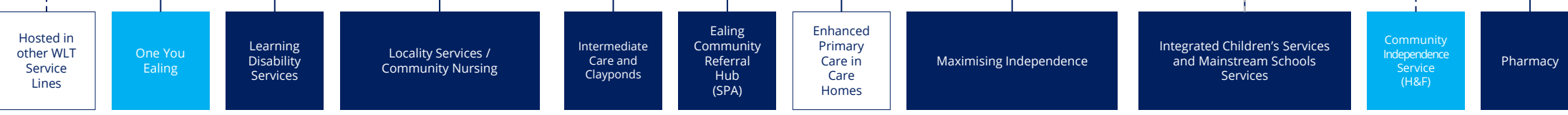
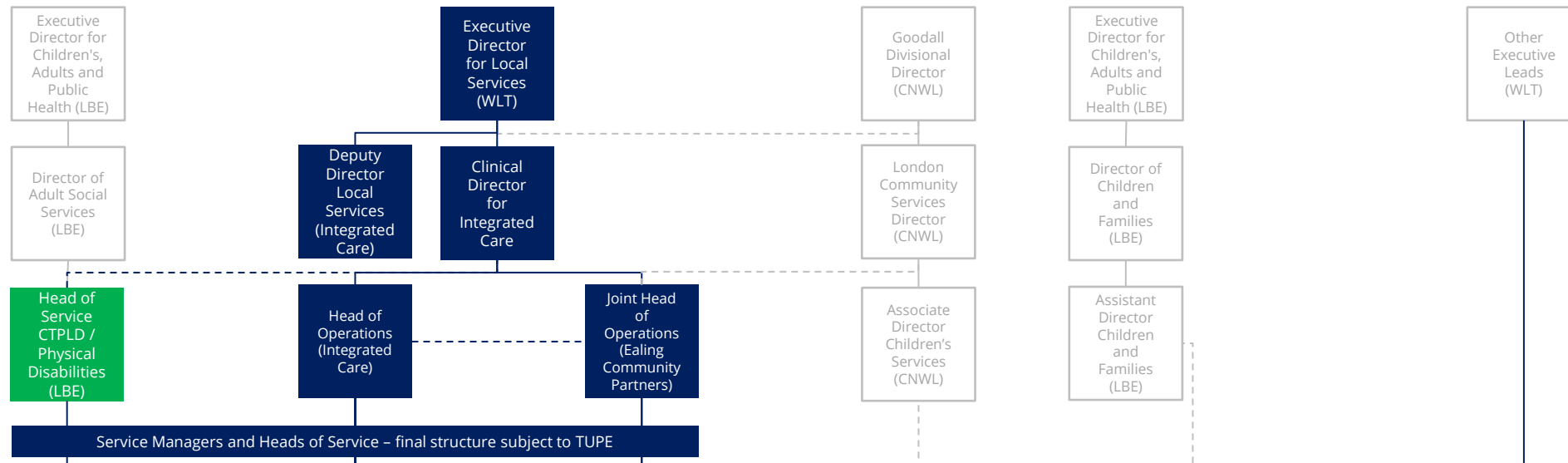


# Integrated care service line - West London NHS Trust

## How will the community services be organised?



Ealing Community Partners



<p>Primary Care Mental Health (CARMHS)</p> <p>Health Psychology and Pain (PsychMed)</p> <p>Dementia Link Workers (CIDS)</p> <p>Dementia Support Services (CIDS)</p> <p>Mind Pathways Service (CARMHS)</p>	<p>Childhood Weight Management</p> <p>TB Outreach</p> <p>FGM</p> <p>Health Trainers</p> <p>ESOL</p> <p>Healthy Walks</p>	<p>LD Psychiatry</p> <p>LD Psychology</p> <p>LD Nursing</p> <p>LD Physiotherapy</p> <p>LD Occupational Therapy</p> <p>LD Speech and Language Therapy</p> <p>Integration with: LD social care</p> <p>Adult autism diagnosis pilot - Ealing</p> <p>HRCH Hounslow Adult LD Consultant</p>	<p>Community / District Nursing - North</p> <p>Community / District Nursing - Southall</p> <p>Community / District Nursing - Ealing and Acton</p> <p>Twilight community nursing (until Oct)</p> <p>Domiciliary Phlebotomy</p> <p>Bladder and bowel services</p> <p>Tissue Viability</p> <p>Care Coordination</p> <p>Diabetes integrated care</p> <p>Diabetes Education</p> <p>Integrated healthy lifestyles services (WLT)</p>	<p>Rapid response</p> <p>Magnolia ward</p> <p>Jasmin ward (general rehabilitation)</p> <p>Rosemary ward (complex and neuro-rehabilitation)</p> <p>Twilight community nursing services (From Oct)</p> <p>Home First (discharge)</p> <p>Integration with: social care reablement</p>	<p>North West London Telemedicine Initiative</p>	<p>End of life care nursing home project</p> <p>Mental health nursing home project</p>	<p>Ealing Day Treatment Centre</p> <p>Falls</p> <p>Community Neurological Rehabilitation</p> <p>Intermediate care (STR)</p> <p>Adult and children podiatry</p> <p>SLT Adults</p> <p>Nutrition and dietetics - adults and children</p>	<p>Musculoskeletal Services</p> <p>Pulmonary rehabilitation</p>	<p>Children's Specialist Community Nursing Service</p> <p>Children's Special School Nursing</p> <p>Children's Audiology</p> <p>Children's SLT</p> <p>Children's Physiotherapy</p> <p>Children's OT</p> <p>Child Development Team</p> <p>Looked After Children</p> <p>Link with LBE services (social care and education) and link with CAMHS</p>	<p>Mainstream schools SLT, OT and PT contracts</p>	<p>CIS Rapid Response</p> <p>CIS Liaison / Home First</p> <p>CIS Short Term Rehabilitation</p> <p>H&amp;F Care Coordination</p> <p>Link to: LBHF Reablement Service</p>	<p>Pharmacy</p>
---	--	--	--	--	--	--	---	---	---	--	---	-----------------

**Key:**

ECP services

Other services in the Service Line

Links to Social Care